

# **Marijuana and Other Drug Use Minnesota College and University Students**

**Data from a 2006 survey of students in  
12 post-secondary schools**

Katherine Lust. Ph.D., M.P.H., RD  
Associate Program Director  
Boynton Health Service –University of Minnesota

# Marijuana Use

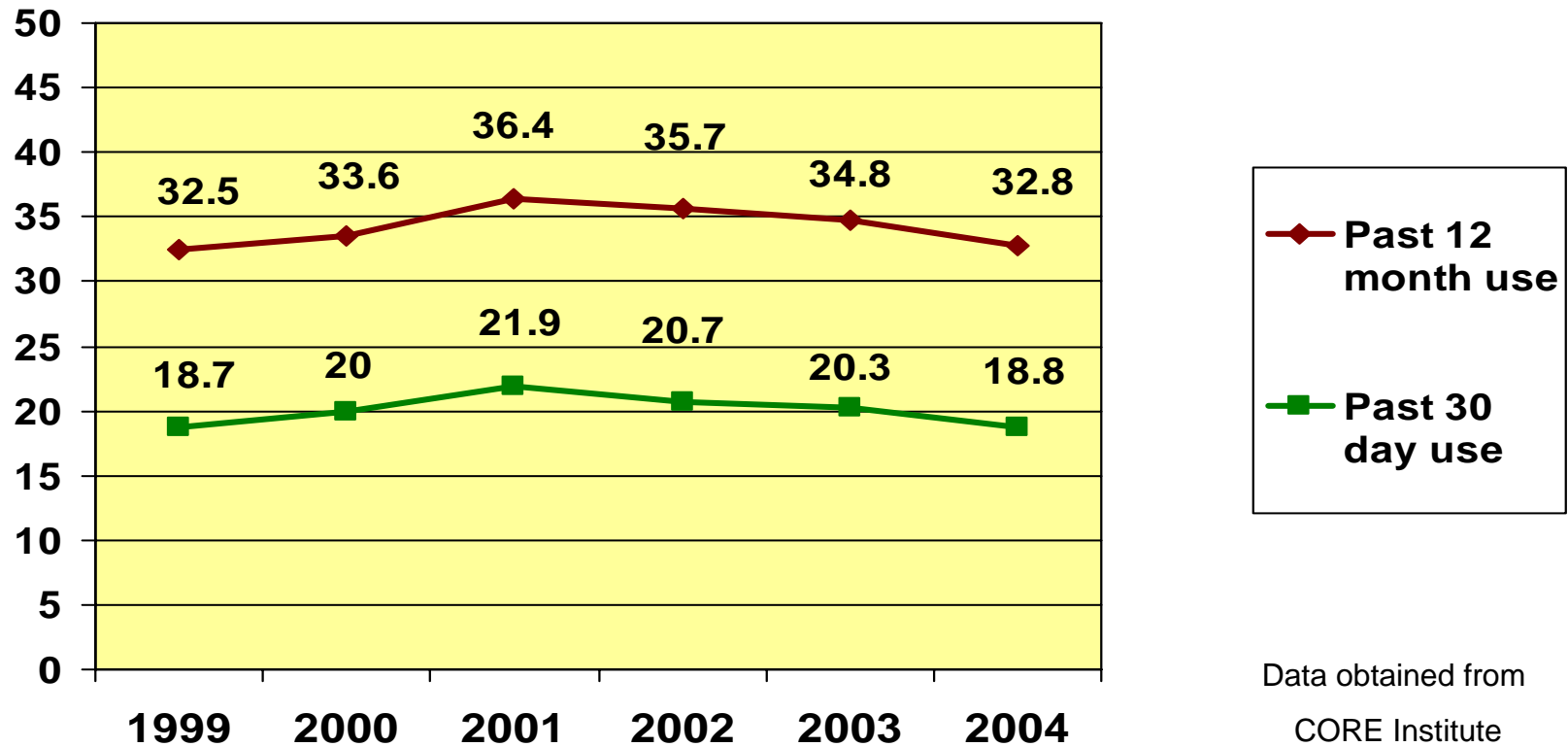
- Past 12 month use rates
- Past 30 day use rates
- Daily marijuana use rates
- Relationship to GPA



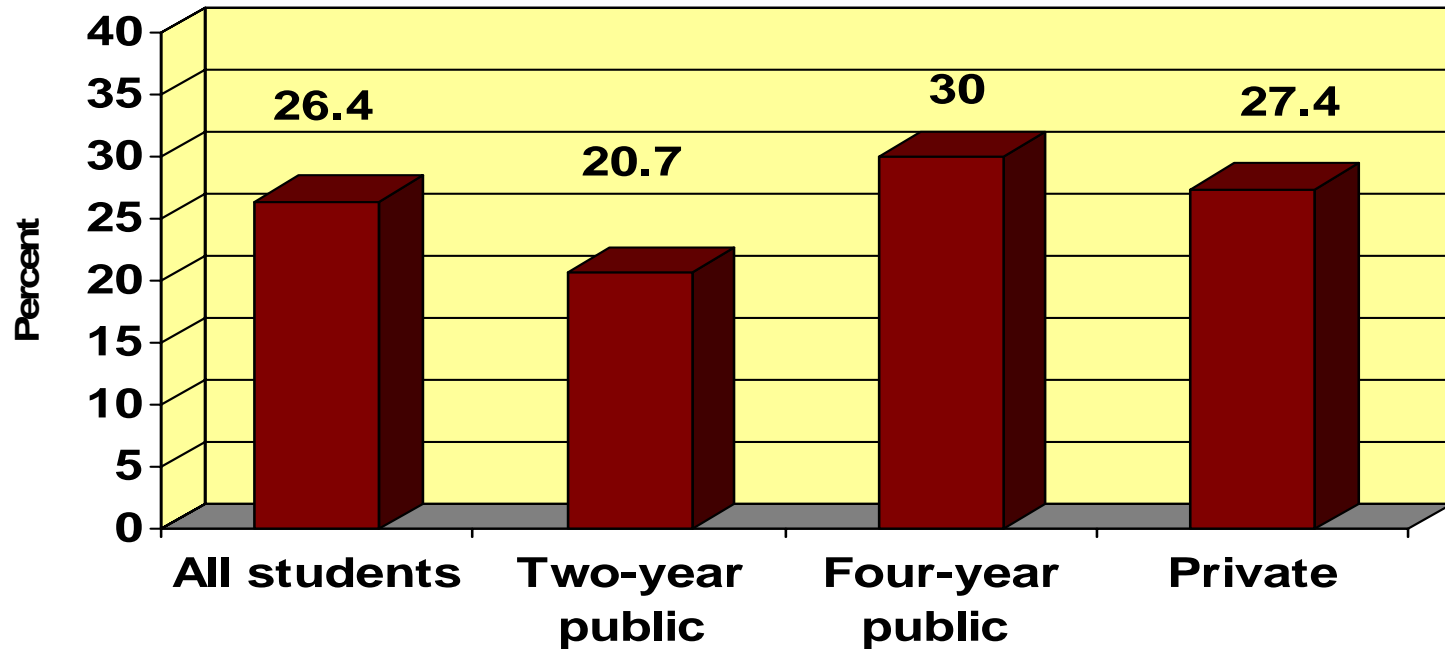
# Other Drug Use

- Past 12 month use rates
- Relationship to GPA
- Relationship to Negative Consequences

# Marijuana Use: National Trend Data

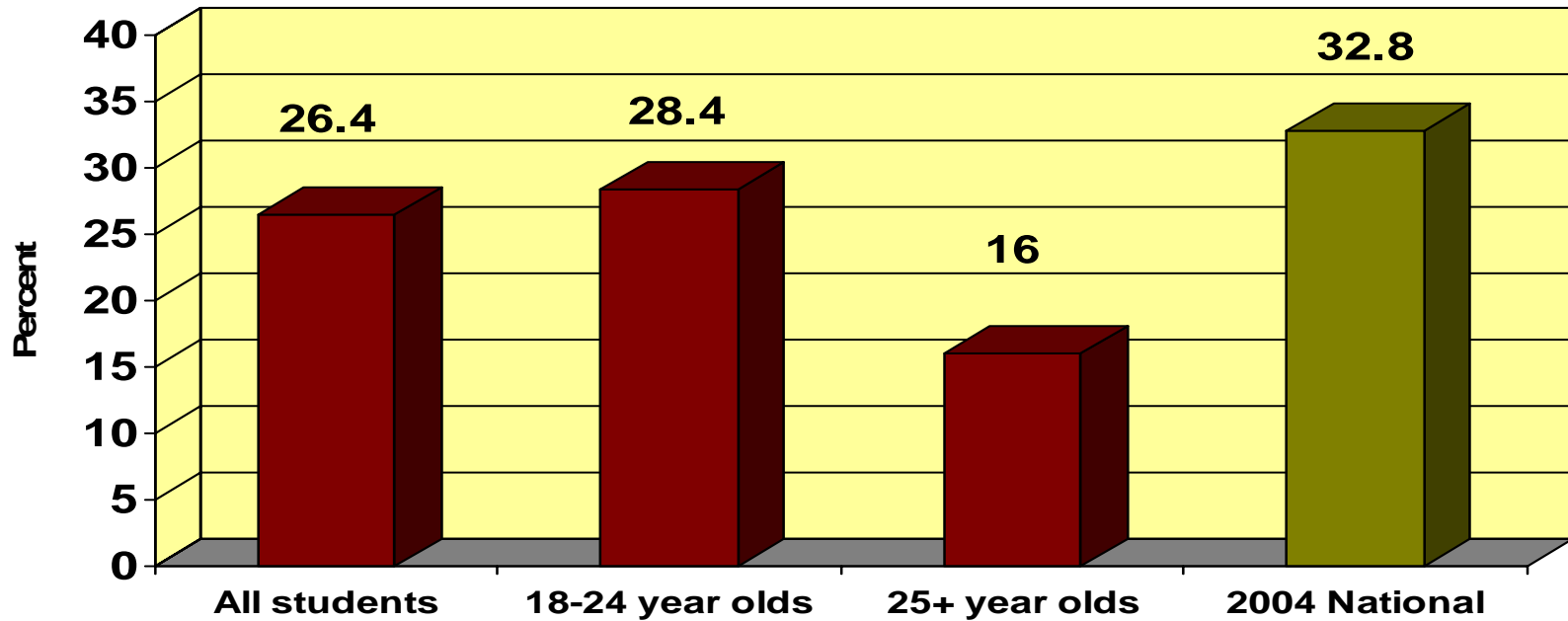


# Past 12 Month Marijuana Use By Type of Institution

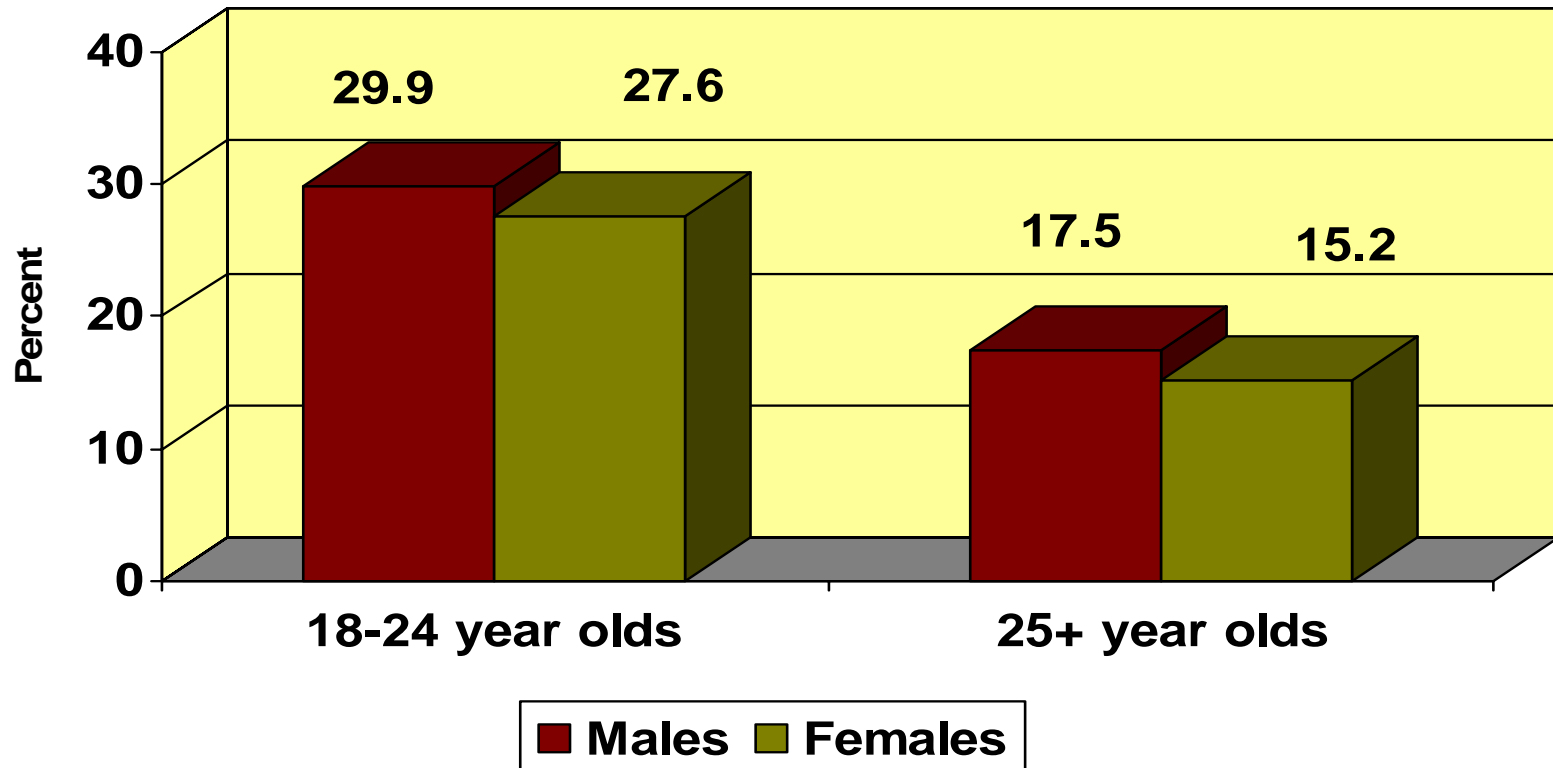


**Range across all schools: 13.4% to 31.9%**

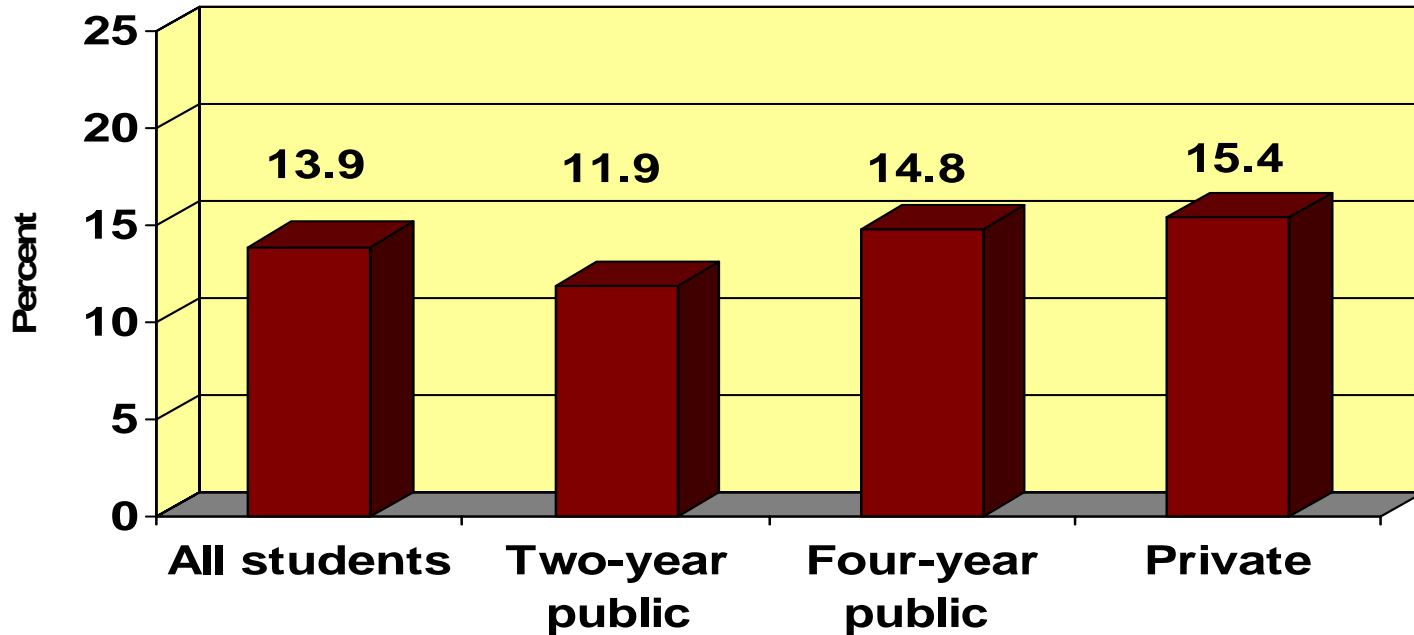
# Past 12 Month Marijuana Use By Age Grouping



# Past 12 Month Marijuana Use By Gender and Age grouping

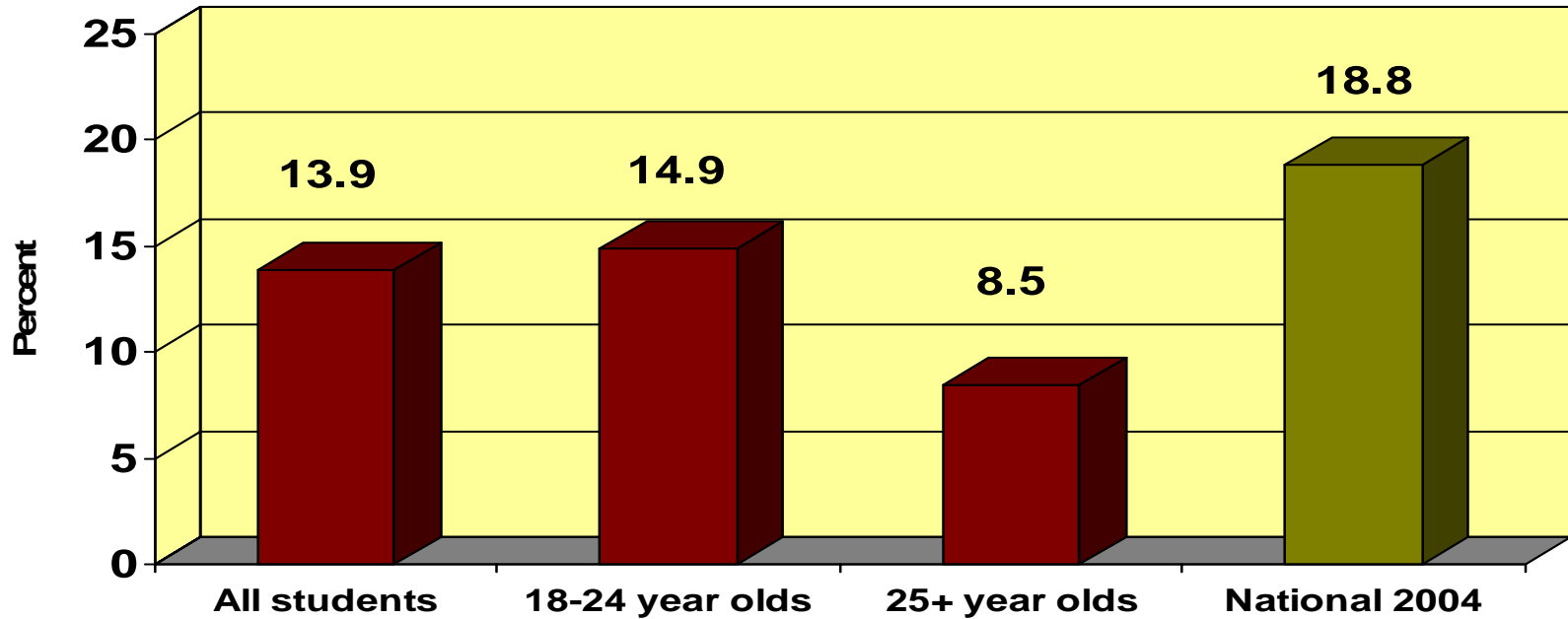


# Past 30 Day Marijuana Use By Type of Institution

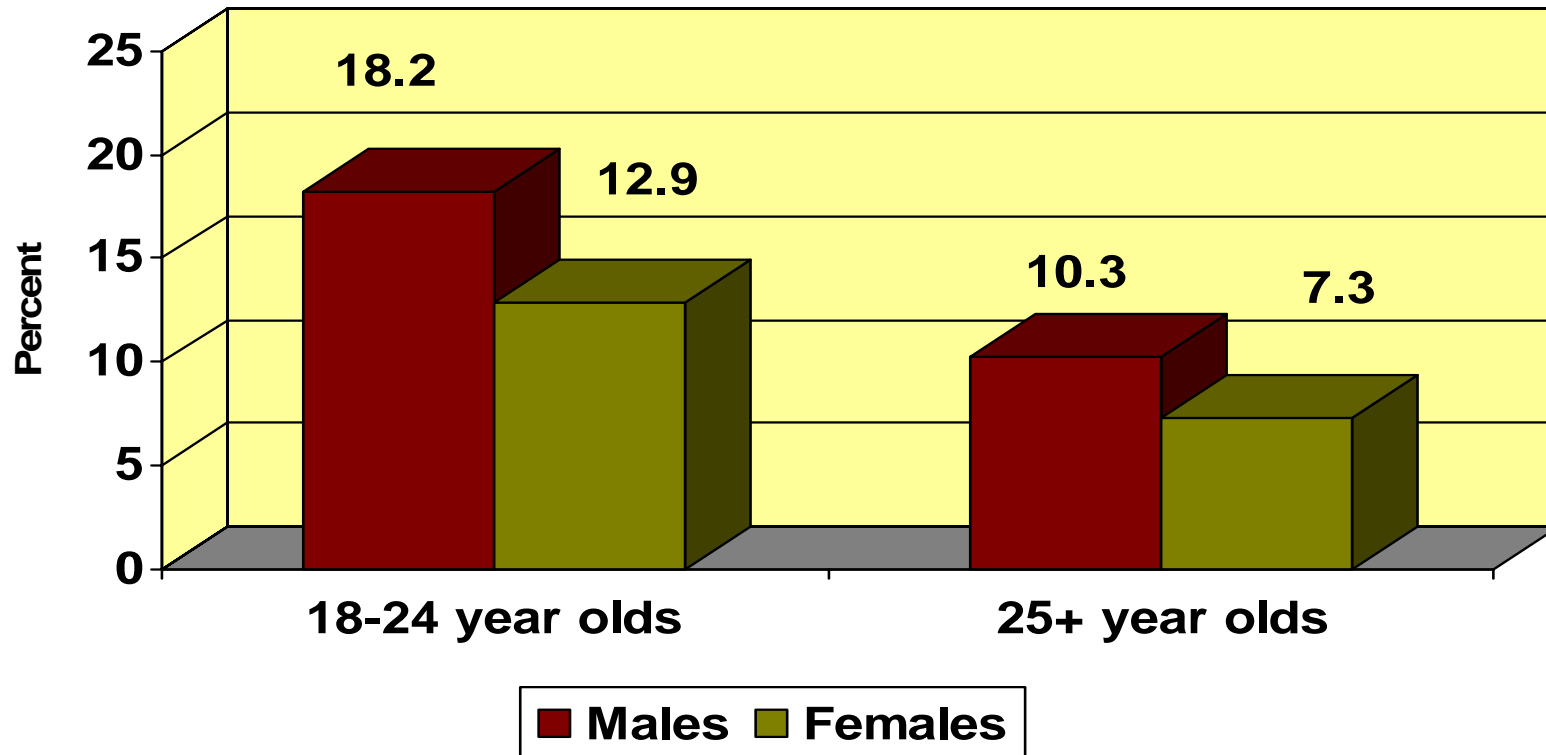


**Range across all schools: 7.5% to 17.5%**

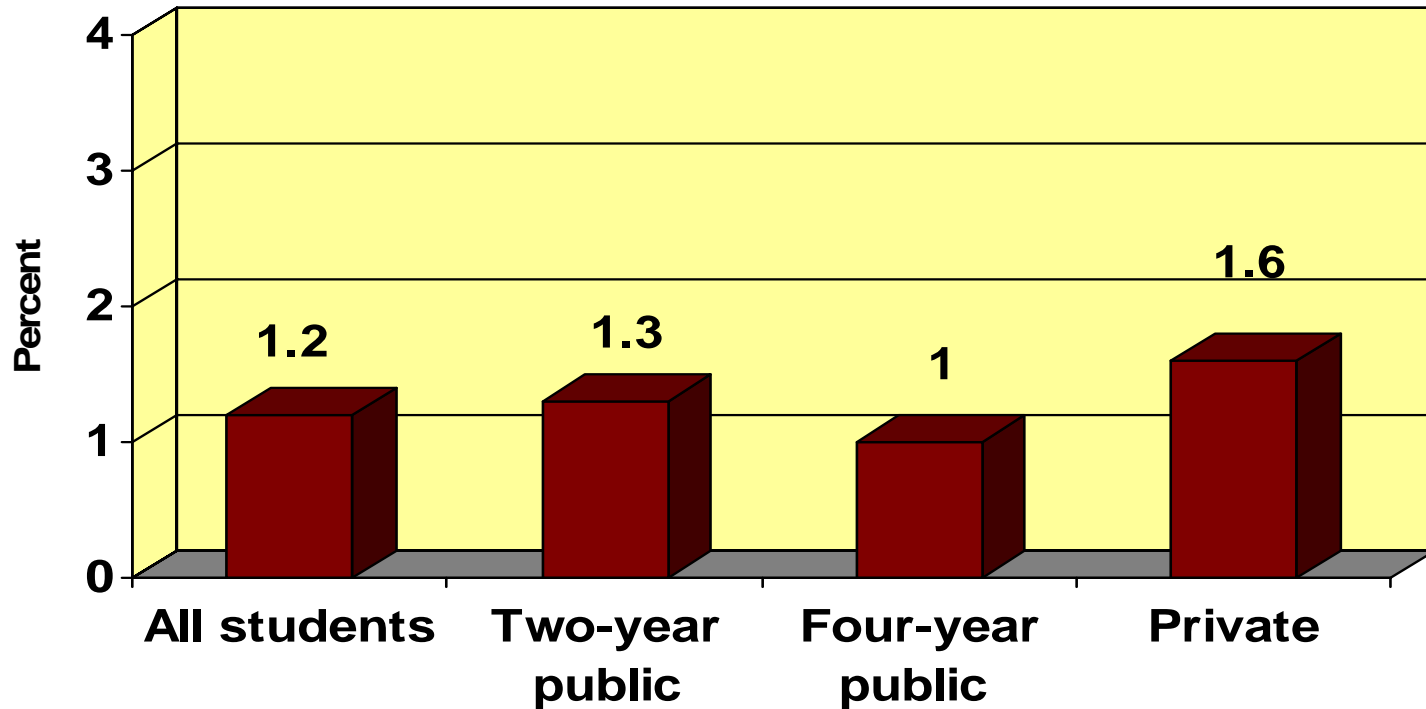
# Past 30 Day Marijuana Use By Age Grouping



# Past 30 Day Marijuana Use By Gender and Age grouping

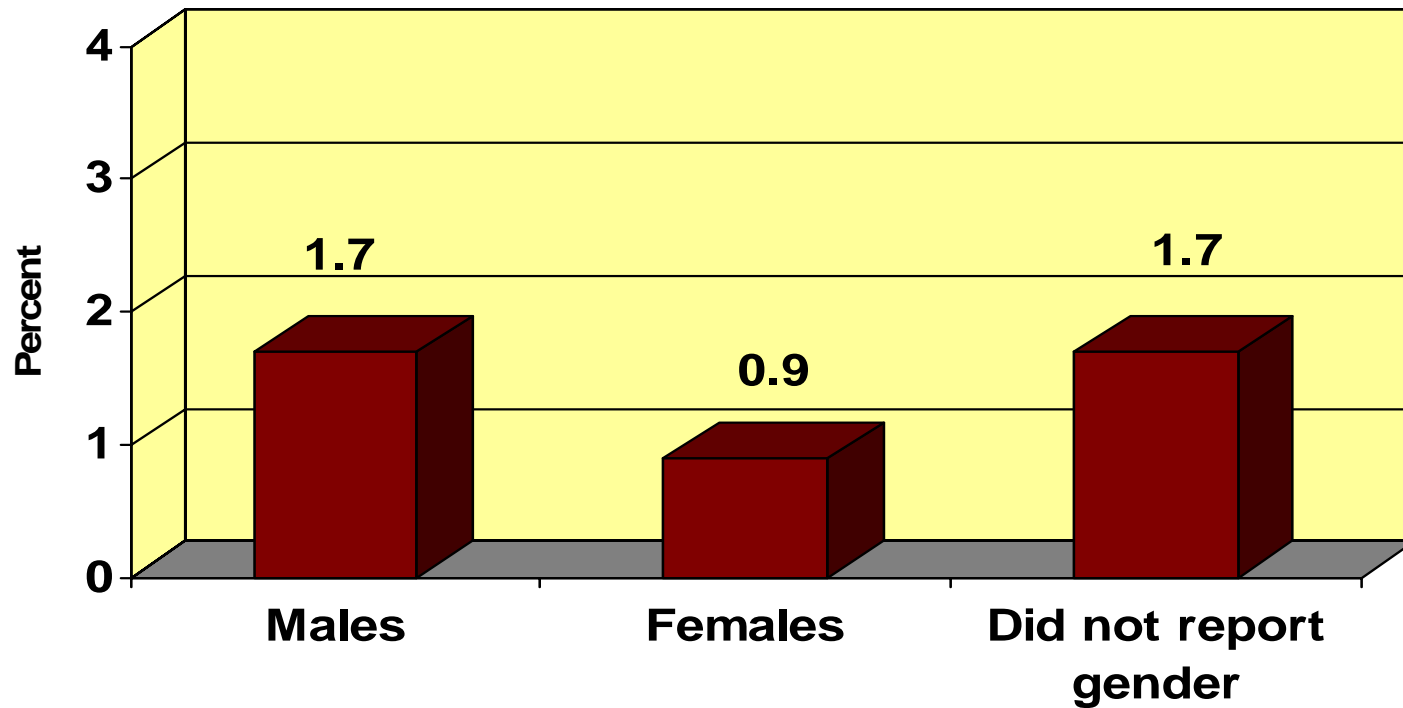


# Daily Marijuana Use By Type of Institution



**Range across all schools: 0.0% to 2.8%**

# Daily Marijuana Use By Gender



# Other Drug Use

- Included the use of the following drugs:

**Cocaine**

**Amphetamines**

**Sedatives**

**Hallucinogens**

**Opiates**

**Inhalants**

**Designer drugs**

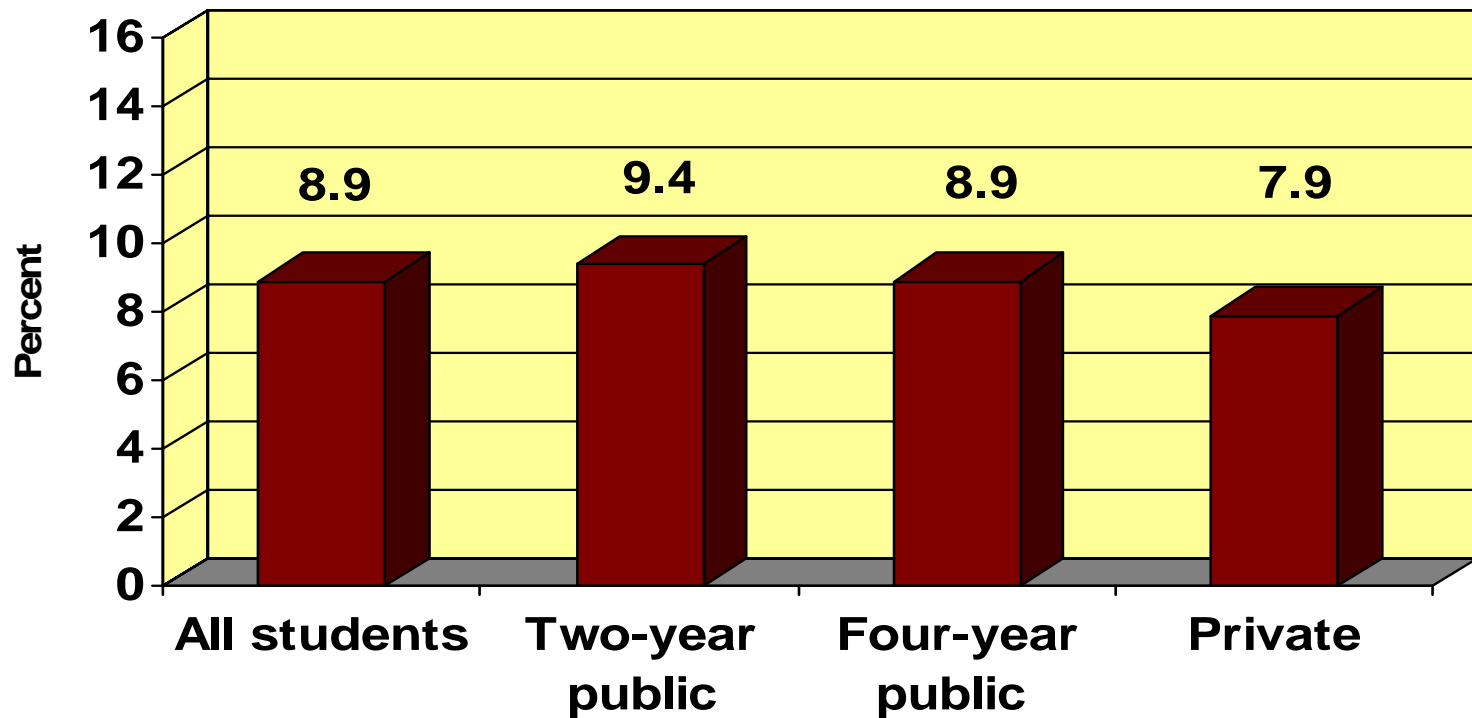
**Steroids**

**Other illegal drugs**



# Any Other Drug Use By Type of Institution

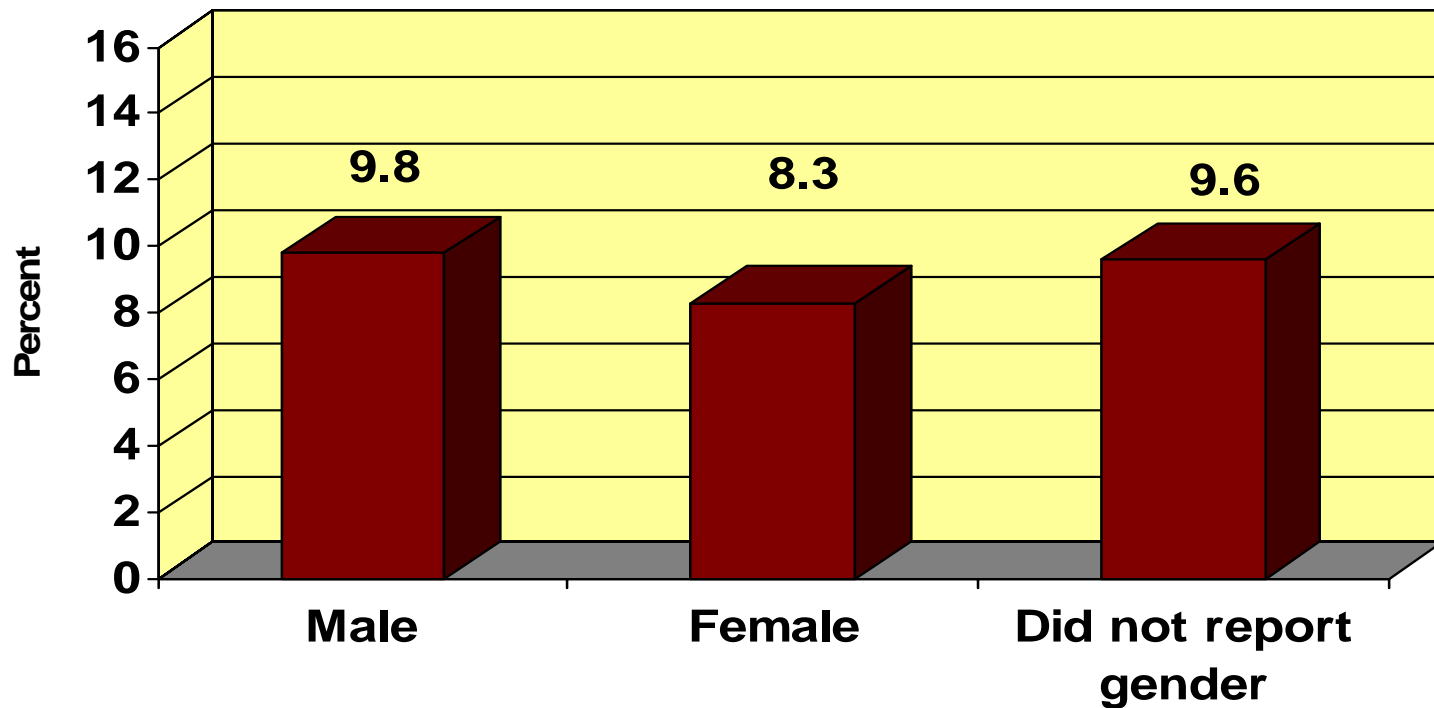
Does not include marijuana



**Range across all schools: 4.4% to 14.0%**

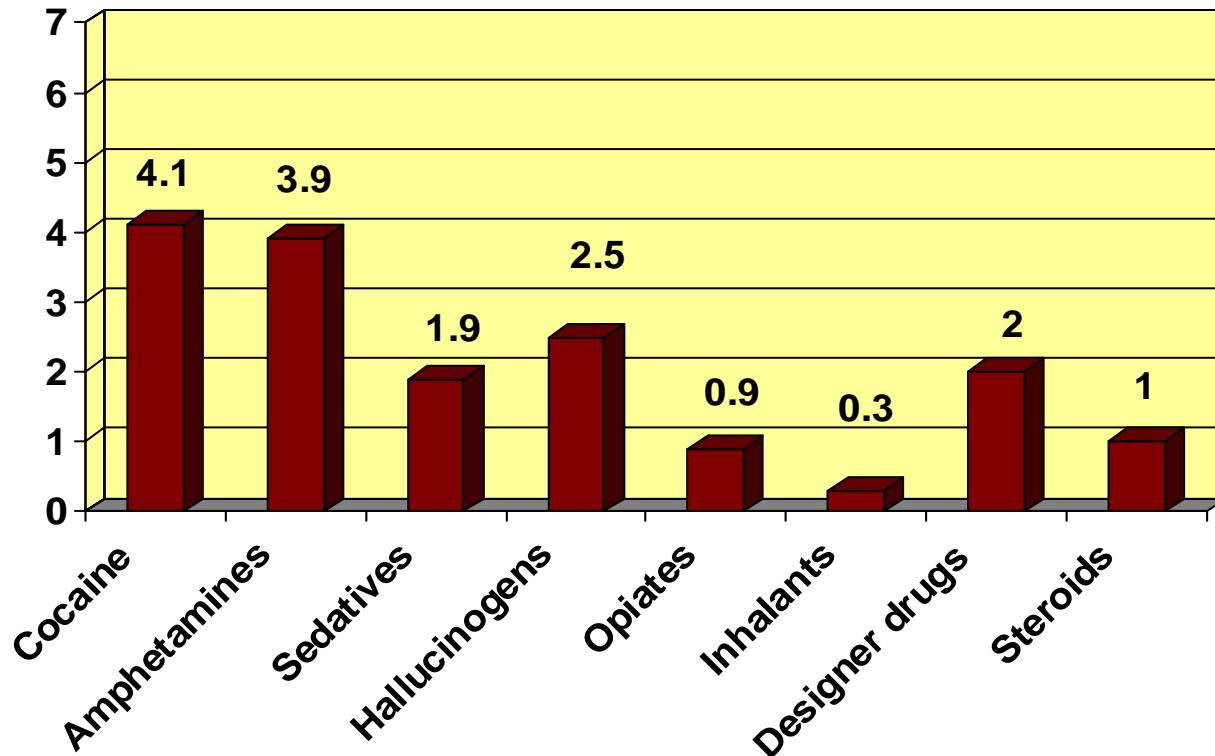
# Any Other Drug Use By Gender

Does not include marijuana



# Any Other Drug Use

Does not include marijuana



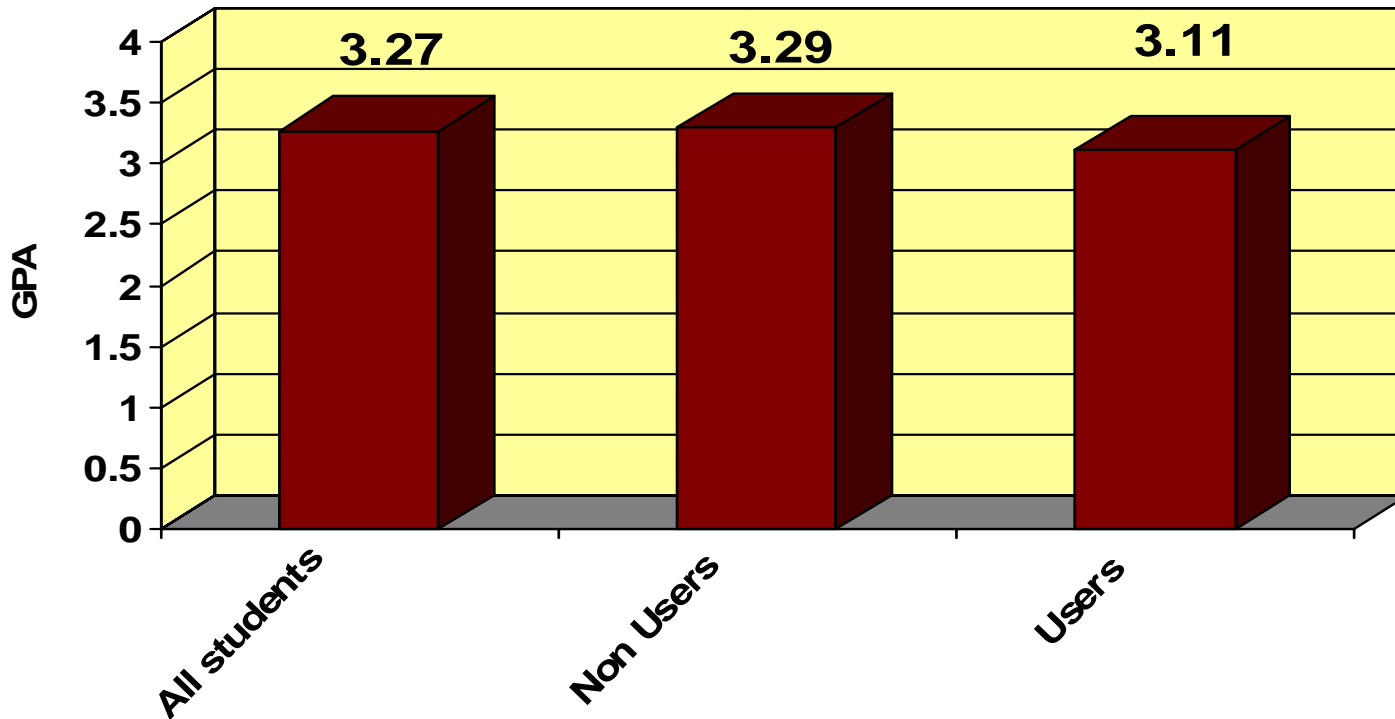
# Marijuana and Other Drug Use

## Relationship to Grade Point Average and Negative Consequences



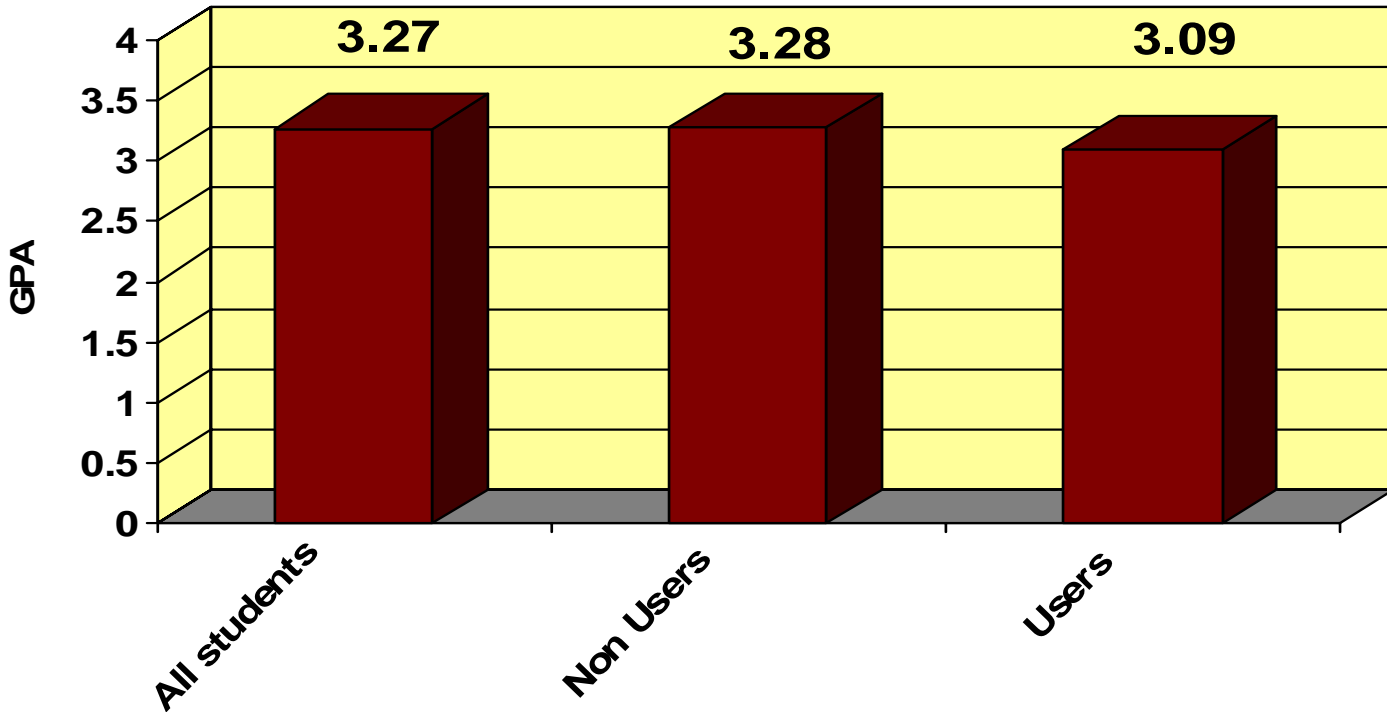
# Current Marijuana Use

## Relationship to Grade Point Average



Statistically different  $p < 0.0001$

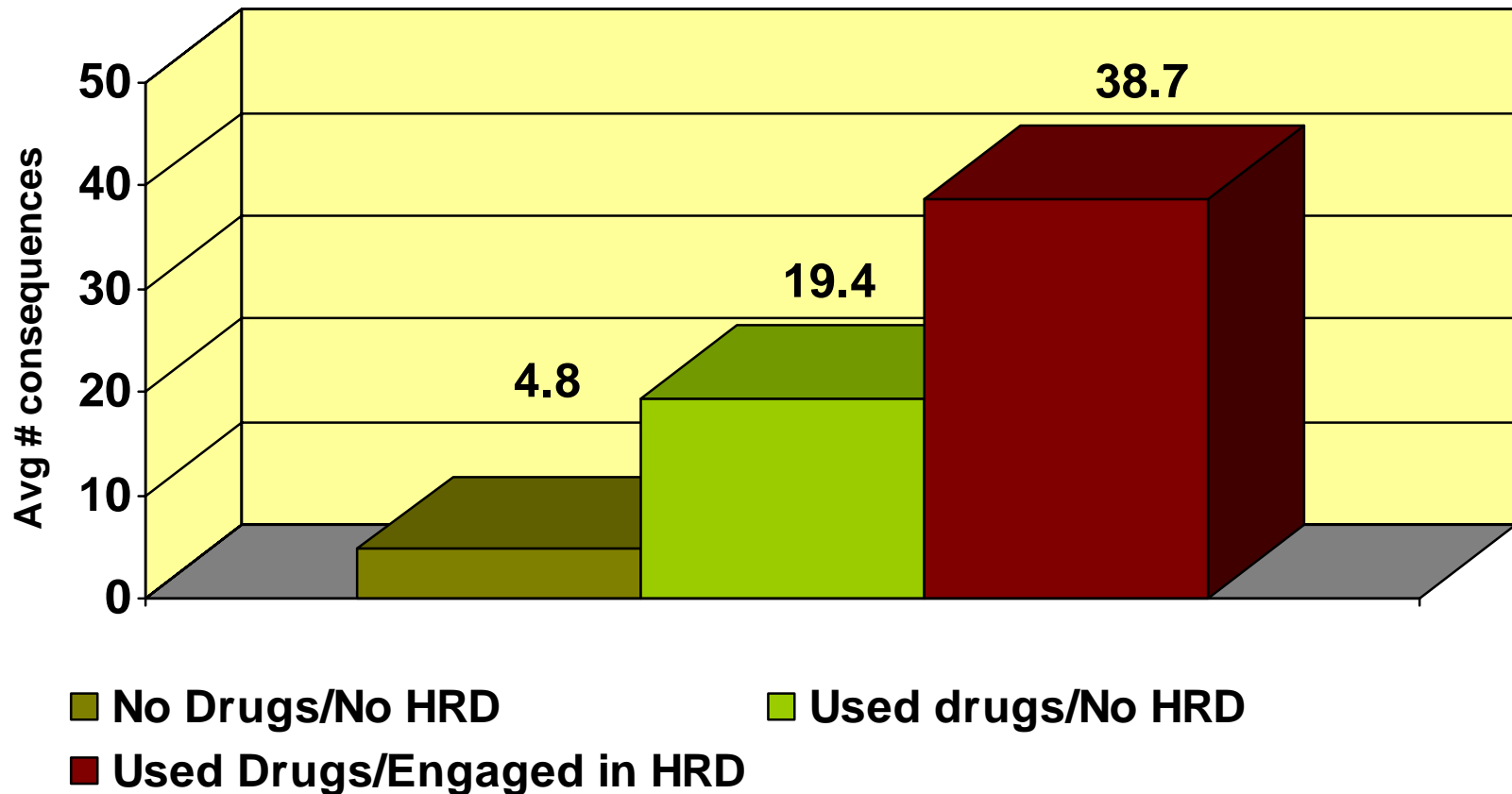
# Past 12 month Drug Use Relationship to Grade Point Average



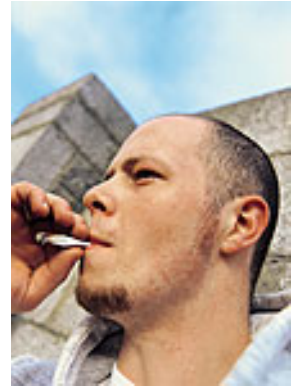
Statistically different  $p < 0.0001$

# Any Other Drug Use

## Relationship to Negative Consequences



# Conclusion



- Marijuana is the most frequently used illicit drug
- Marijuana use tends to be higher among students aged 18-24 vs. 25+
- Males have slightly higher 30 day marijuana use; 12-month use rates look similar between genders
- 30 day marijuana use rates highest among students attending private institutions

# Conclusion

- Other illicit drug use highest amongst students attending two-year public institutions and among males
- Appears to be a relationship between marijuana and other drug use and GPA
- Relationship between other drug use and negative consequences



**Thank You**